

Double N Ranch History

1905 - Maurice Ingeveld arrives in Canada, and begins search in the Calgary area for ideal location for raising fine horses. Registers Double N Brand



Glenbow Archives NA-227-1

Image No: NA-227-1

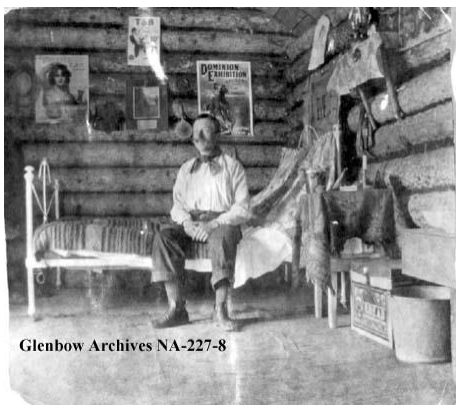
Title: Maurice Ingeveld and friends looking for land to homestead, Bow River, Alberta.

Date: 1906

Remarks: Translation of french on back: "Exploring the countryside for land in the foothills. We are in the bed of the Bow River." People on horse and in wagons.

L-R: Mr. de Malherbe, Count de Roaldes, three Englishmen, Baron Dougat d'Empeaus, Maurice Ingeveld.

1906 - Maurice Ingeveld claims homestead in Frenchman's Valley (named after the trio of Belgian horsemen) in Square Butte community SW of Calgary. Begins horse breeding/training with European partners listed above.



Glenbow Archives NA-227-8

(Picture) Grandpa in his cabin in 1908

1912 - Grandma arrives in Canada, and marries Grandpa. Grandpa wins the high jump event at the Calgary Horse Show, and places well in several other events.

1914 - Everyone returns to Europe for WW1, Grandpa is a Sergeant Major in the Belgian Cavalry.

1919 – George Ingeveld is born in Belgium

1927 – Ingeveld family returns to Canada

1932 – Return to the ranch, purchases cattle and machinery.



(Picture) 1939 – George volunteers for WW2

1945 – George returns from overseas

1947 – Mom arrives in Canada and marries Dad

1959 – Oh marvelous day...George & Elsie's third child arrives

1969 – George moves the ranch to Sundre area, begins raising Quarterhorses, and purchases first purebred Polled Hereford cattle



(Picture) 1979 – Gerald graduates from Olds College, marries Shelley Wenzel.

1979 – 1989 – Gerald works in oilfield, then custom farming, and builds purebred herd along with his brother Roger. Children: Amanda & Darrell.

1994 – Gerald becomes partner with George and becomes herd manager for Double N Ranch. Combined herd reaches 150 purebred cows

2002 – Gerald and Shelley buy out Roger, and Double N becomes 3 way partnership: George, Gerald & Shelley.



(Picture) Shelley, Gerald, George, Elsie Ingeveld)
2003 – BSE...Begin direct marketing

2006 – George and Elsie pass on, herd reduced to 100 head, west place sold to settle estate.



2006- Present – Gerald & Shelley carry on with operations.

